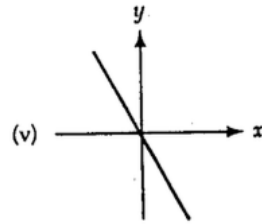
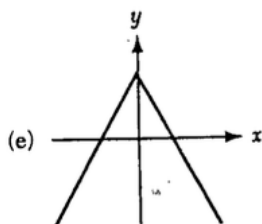
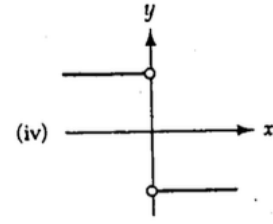
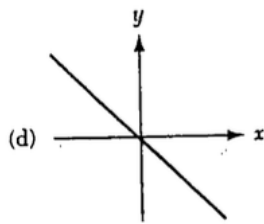
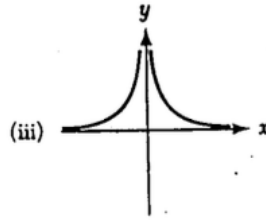
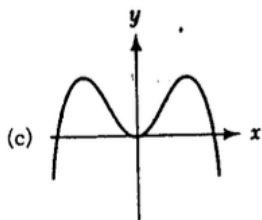
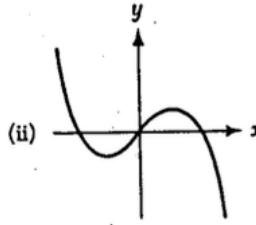
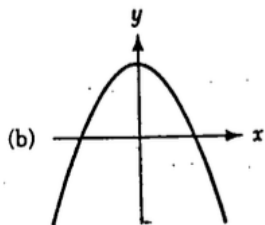
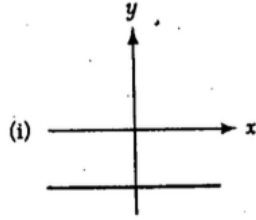
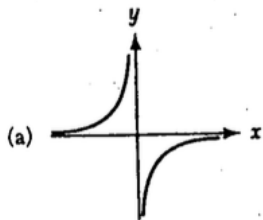


Amount and Rate Functions – (e.g.  $f$  and  $f'$ )

1. The left-hand column has graphs of five amount functions. The right-hand column – in a different order – has graphs of the associated rate functions. Match each function with its derivative. Be sure you can justify your choices using *Seven Easy Pieces*. [Note: The scales on the graphs are not all the same.]



2. Evaluate  $\lim_{x \rightarrow 3} \frac{x^2 - 9}{x - 3}$ .

(a) Use algebra

(b) Use geometry